

Everybody knows what motion is, but how do you measure it?

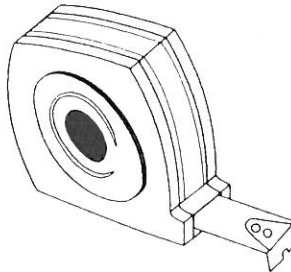
- One way is to measure *distance*, how far something goes during a motion.
- Another is to measure *time*, how long a motion takes to occur.
- A third way is to measure *speed*, how fast something is moving.

Each of the devices shown below can be used to measure some aspect of motion.

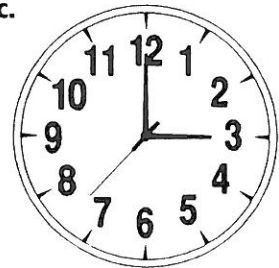
a.



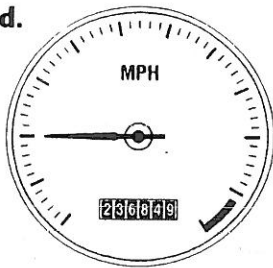
b.



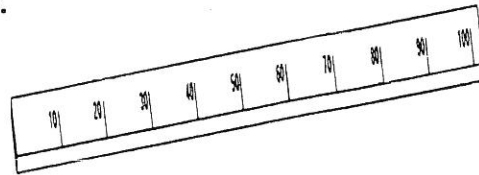
c.



d.



e.



1. For each of the devices above, indicate whether it measures *distance*, *time*, or *speed*.

- a. _____
- b. _____
- c. _____
- d. _____
- e. _____

2. For each of the devices above, indicate which of the following units are possible for a measurement: meters (m), seconds (s), or meters per second (m/s).

- a. _____
- b. _____
- c. _____
- d. _____
- e. _____